



VDI for Today's Dynamic Desktop

Virtual Bridges offers a fresh alternative to VDI. Our flagship product, VERDE, is an end-to-end virtual desktop infrastructure and management solution that combines VDI, offline VDI and VDI remote branch solutions to remove the management burden, complexity and cost traditionally associated with desktop virtualization solutions.

The VERDE suite includes: VERDE™ Core, VERDE Console™, VERDE VDI™, VERDE LEAF™, VERDE Cloud Branch™

VERDE offers unified management and reporting through a single console and is adaptable for today's dynamic environment. Ideal for companies of all sizes, VERDE can scale up to ten thousand clustered servers or scale down to a single-server configuration.

VERDE CORE

- Servers and Clusters
- Gold Master Images
- AD/Directory Services
- Shared Storage
- Lightweight App Layering technology streamlines deployment of applications inside VERDE Gold Master Images
- Single console supports USB peripherals for online, offline and branch VDI users

VERDE brings together powerful core technology that no other vendor can match including:

Servers and Clusters – VERDE servers authenticate and authorize user access to Gold Master Images based on corporate policy; sessions are then run directly from the servers.

Gold Master Images – Gold Master Image provisioning reduces management significantly. Administrators create only a few desktop images with the required operating system and applications that different classes of users need. Users then run a read-only copy of the Gold Master Image with all the personal settings and documents written to a separate user disk.

AD/Directory integration – Seamlessly integrates with Active Directory, Novell E-directory and other Directory Services for AAA.

Shared Storage – Works with Direct Attached Storage and any external shared storage NAS or SAN. Allows using clustered local attached storage using GFS and GPFS to dramatically lower the cost of VDI storage requirements.

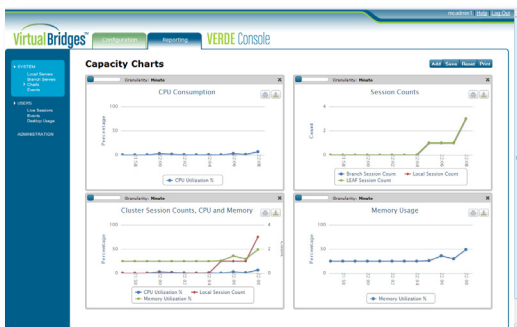
VERDE VDI

- Desktops hosted and managed in data center
- Clients: PCs, Mac, Thin Clients & PDAs, Windows and Linux
- VERDE Display protocol, RDP, NX, SPICE

VERDE Virtual Desktop Infrastructure provides dynamic routing of user sessions to the least busy and memory optimized VERDE server through Distributed Connection Brokering. This brokering provides no single point of failure or choke point allowing greater availability and scalability. Additionally, the VERDE Server Side Hypervisor includes the VERDE Hypervisor based on a KVM hypervisor optimized for Desktop Virtualization. Hardware-assist (VT) allows more desktops to run per CPU core. KSM (Kernel Shared Memory) improves memory density.

Highlighted Capabilities Include:

- Completely stateless cluster servers increase scalability with Distributed Connection Brokering architecture
- Role- and task-based provisioning for VDI deployment modes
- Purpose-built solution runs on Windows, Linux, MAC workstations, Netbooks, iPads and PDAs.
- Multi-task capabilities enable users to launch more than one virtual desktop session simultaneously
- Support for SPICE high-def multimedia protocol and SmartCast technology provisions the appropriate protocol (SPICE, RDP or NIX) based on the user connection and type of desktop for a rich PC experience
- Single console supports USB peripherals for online, offline and branch VDI users

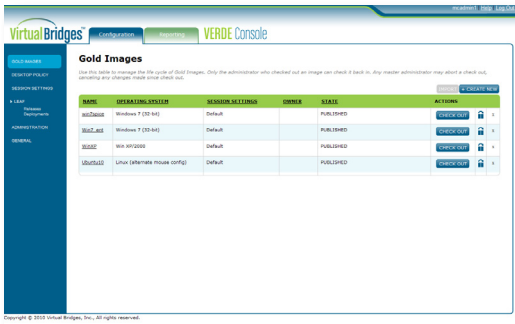


Highlighted Capabilities Include:

- Completely stateless cluster servers increase scalability with Distributed Connection Brokering architecture
- Gold Master Image model ensures users are running the latest version, significantly reducing the number of images requiring management and providing native malware resistance to all desktop sessions

The VERDE web-based monitoring console offers real-time visibility to all virtual desktop sessions running on VERDE cluster servers. Administrators have flexibility to view virtual desktop sessions grouped by user or server or based on type of Gold Image. In addition, the console provides real-time server utilization metrics.

Highlighted Capabilities Include:



- Unified management console between VDI, offline VDI and branch VDI.
- At-a-glance views to virtual desktops by user, server or type of Gold Image.
- Configurable reporting including capacity and historical data, user events (login/logout) desktop and application activity, admin events (login/logout), etc.
- Centralized visibility for VDI, offline VDI and branch VDI.
- Support for USB peripherals in VDI,

offline VDI and branch VDI users.

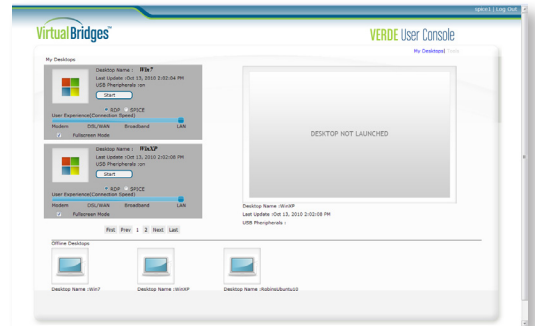
- Desktops hosted on the local PC & managed from data center
- Desktops hosted from USB stick and managed from data center
- Access Client: Any web browser, including PDAs

VERDE Live Environment Access Format (LEAF) provides both connected (access to remote virtual desktop sessions) and offline (virtual desktop session is locally cached and executed on the client machine) access. LEAF is a self-contained local desktop virtualization platform that is fully secure, so there is no need to worry about external endpoint security solutions. LEAF also includes integrated VOIP (Skype) applications.

Highlighted Capabilities Include:

- Fully-integrated [Type 1 client Hypervisor] for offline VDI users either on a laptop or portable drive with automatic bi-directional sync.

- Support for USB peripherals for online, offline and branch VDI Users.
- Gold Master Image model updated on the central server and automatically reflected in the user's offline LEAF environment.
- Centralized management through LEAF provides disconnected/local execution for mobile and offline desktop users.
- Desktops hosted on branch server & managed from data center
- Clients: Devices with VT or AMD-V



Ensure IT services are up and running for every employee, at every branch. VERDE Cloud Branch eliminates WAN latency to deliver a native-PC experience even over choppy and unreliable networks. VERDE Cloud Branch reduces network bandwidth in many scenarios while providing business continuity even if the network is down. Our Cloud Branch server connects directly to the VERDE Cluster and Gold Master Image repository, providing a consistent, high-quality experience.

Highlighted Capabilities Include:

- Direct connection ensures branch users are running the latest, authorized copies of desktop sessions.
- Organizations benefit from higher performance and response times while maintaining centralized control of desktop images in the data center – eliminating the need for expensive WAN optimization infrastructures.
- Support for USB peripherals for online, offline and branch VDI users.
- Zero-admin Cloud Branch delivers LAN-like VDI performance for branch users.

SYSTEM REQUIREMENTS

Standalone or Cluster, in Data Center or Cloud Branch

- 64-bit Intel Xeon or AMD Opteron processor(s) with Intel VT or AMD-V
- 4GB RAM minimum
- 100GB local storage minimum, plus access to shared storage if clustered
- 1Gbps Ethernet port minimum
- Ubuntu Linux Server 10.04, RedHat Enterprise Linux 6, or SUSE Linux Enterprise Server 11

Actual CPU core, memory, and disk capacity depends on concurrent virtual desktop deployment size.

REMOTE VDI ACCESS

- Windows 2000/XP/Vista/7, x86 Linux, or Mac OS X 10.5.X
- Most thin client vendor devices supporting Linux or Windows XPe (e.g. DevonIT, Wyse, etc.)
- Java-enabled web browser required (IE, Chrome, Firefox, Safari)

VERDE LEAF

Managed Local Process and Disconnected Use

- 64-bit Intel or AMD processor with Intel VT or AMD-V technology
- 2GB RAM minimum (3GB or more recommended)
- 32GB local storage minimum (internal hard disk or portable drive)

- Ethernet or wireless networking

Actual CPU power, memory, and disk capacity depends on type and size of virtual desktop(s) to run on client. Minimum requirements are okay if LEAF is used for VDI access only.

Supported Virtual Desktops

Supporting Virtually All Desktop Applications

- Windows XP or Windows 7 (including 64-bit Windows 7)
- 32 or 64-bit RedHat Enterprise Linux 5 (or CentOS 5.x)
- 32 or 64-bit RedHat Enterprise Linux 6